



Instruction Manual

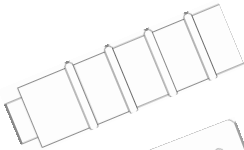
Version 1.0



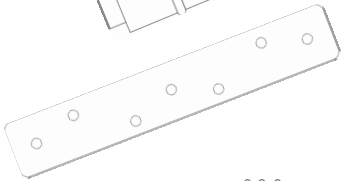
Contents

- 3 What's included?**
- 4 Tray set up**
- 5 Single handle setup**
- 6 Extended handle setup**
- 7 Bro-Pro Loc-Line adaptor
Setup (optional)**

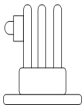
What's included?



2 x Bro-Pro handles



1 x Bro-Pro tray



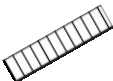
1 x Go-Pro tripod mount



2 x m6 20mm Allen key bolts



1 x 1/4-20 15mm Allen key bolt

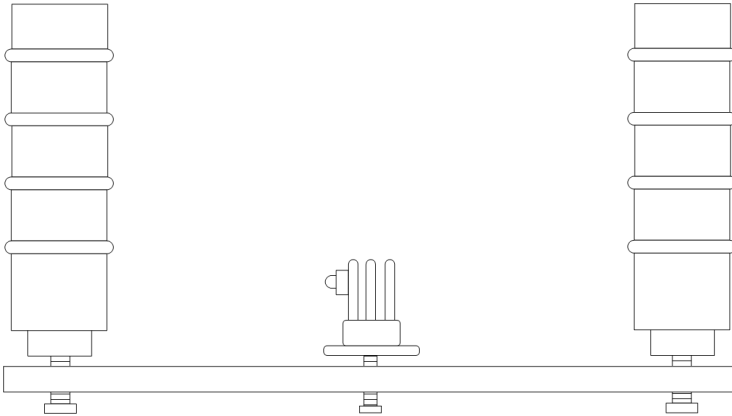


1 x m6 30mm thread



1 x 1/4-20 20mm thread

Tray Setup



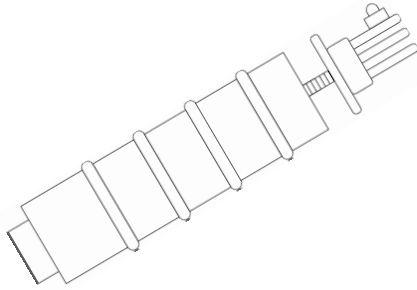
Parts Required

- | | |
|--------------------------------|-------------------------|
| 2 x Bro-Pro handles | 1 x Bro-Pro tray |
| 2 x m6 20mm Allen key bolts | 1 x Go-Pro tripod mount |
| 1 x 1/4-20 15mm Allen key bolt | |

Tools Required

- 1 x m6 Allen key

Single Handle Setup



Parts Required

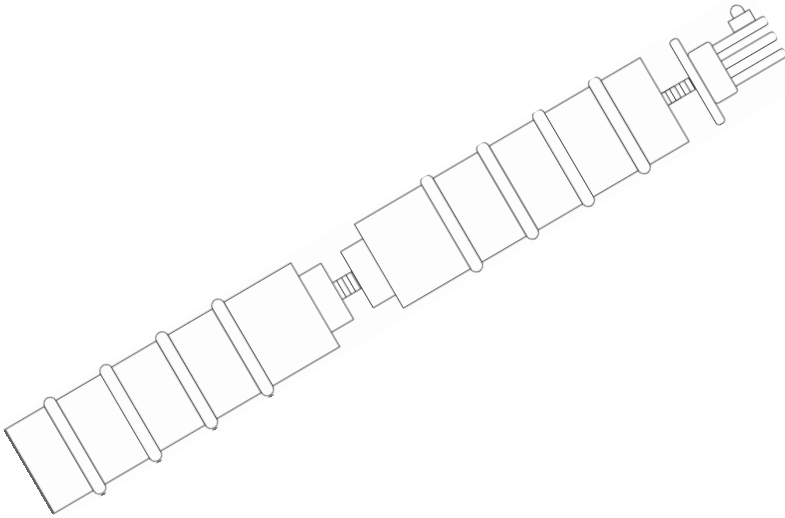
1 x Bro-Pro handles
1 x 1/4-20 20mm thread

1 x Go-Pro tripod mount

Tools Required

None

Extended Handle Setup



Parts Required

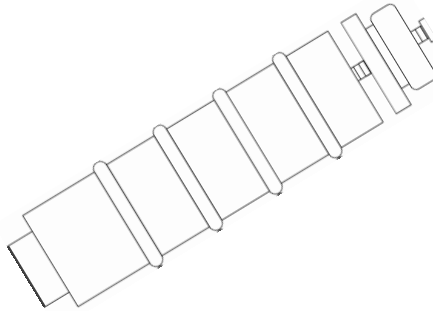
2 x Bro-Pro handles
1 x 1/4-20 20mm thread

1 x Go-Pro tripod mount
1 x m6 30mm thread

Tools Required

None

Bro-Pro Loc-Line adaptor Setup (optional)



Optional Parts Required

1 x Bro-Pro Loc-Line attachment

1 x 1/4-20 15mm Allen key bolt

The Bro-Pro Loc-line adaptor can be fitted to either or both handles and will connect to 3/4" Loc-Line light fittings.

Tools Required

1 x m6 Allen key



www.BroPro.co.uk